

Scaffolding

BOSTA[®] 100



The BOSTA 100 steel frame scaffold system is the trusted solution when it comes to great heights and high loads up to load class 6.

This 100 cm wide frame scaffold system provides plenty of room to maneuver, copes with high loads and masters extreme heights.

HÜNNEBECK 

A BRAND COMPANY

Scaffolding

BOSTA® 100

Product description	Steel frame scaffolding
Frame heights	100 150 200 cm
Frame widths	101 cm
Bay lengths	125 150 200 250 300 cm
Load class	LC 6 (evenly distributed load of 6.0 kN/m ²)
Corrosion protection	Hot-dip galvanization
Plank types	Hollow box plank Steel plank Horizontal frame
Vertical frame weight	200/100 = 27.4 kg
Relevant DIN-norms	Complies with DIN 12811, Pt. 1 DIN 4420, Pt. 1
Application range	Working scaffold Safety scaffold Mobile scaffold Facade scaffold Reinforcement scaffold Stairways
Erection/Dismantling times	$t = 0.10 - 0.15 \text{ h/m}^2 * 0.07 - 0.10 \text{ h/m}^2 *$
Special features	<ul style="list-style-type: none">● Easy, fast and safe one-man assembly possible● High load capacity up to load class 6

Product advantages



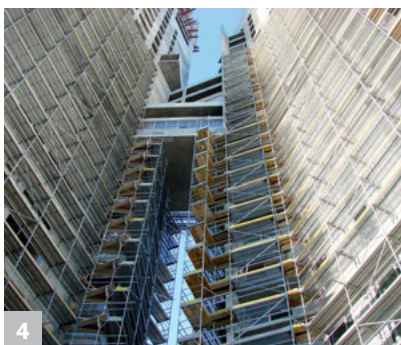
1 More space to move and store materials thanks to the greater system width



2 Optimal use as a working scaffold for heavy loads (max. area load up to 600 kg/m²)



3 Simple calculation and great combination possibilities due to the practical measurements and smooth system dimensions



4 High up - also the standard design is applicable for heights up to 24 m



5 Robust and durable system parts as a result of the complete hot-dip galvanization

HÜNNEBECK

A BRAND COMPANY

Hünnebeck Deutschland GmbH

Rehhecke 80, D-40885 Ratingen

Tel.: +49 (0) 2102 937-1, www.huennebeck.de

* Time calculation (average) by Hünnebeck